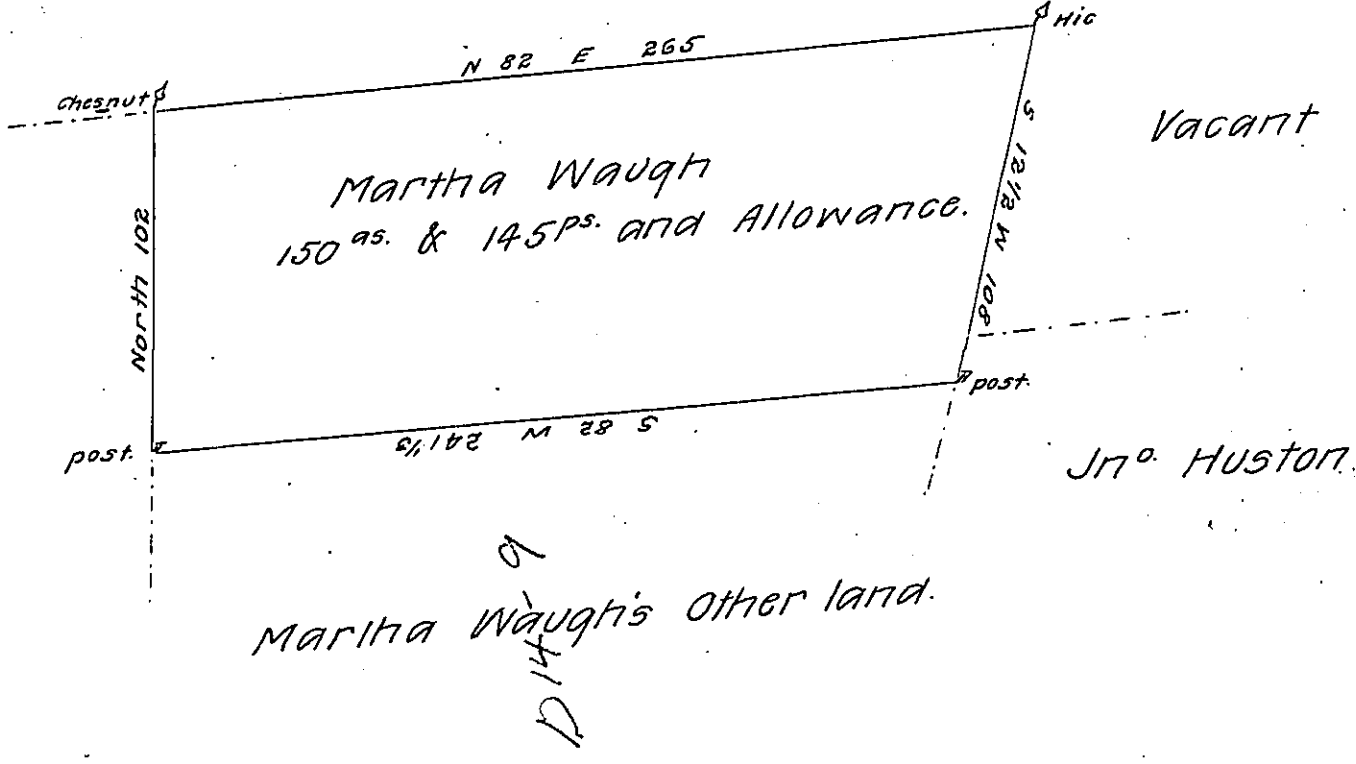


By foot of the North Mountain

@ 30-60
John Glendon



The Draught of a Tract of land situate in East Pennsborough
 township Cumberland County Containing one hundred and
 fifty acres and 145 perches and allowance of six P Cent
 for Roads &c^a Surveyed May 16th 1789 In Pursuance of a
 Warrant to Martha Waugh Dated March 16th 1789

Pr. Sam^l Lyon D.S.

To Daniel Brodhead Esq^r
 Surveyor General.

IN TESTIMONY that the above is a copy of the original remaining on file in
 the Department of Internal Affairs of Pennsylvania, made
 conformably to an Act of Assembly approved the 16th day of
 February 1833, I have hereunto set my hand and caused
 the Seal of said Department to be affixed at Harrisburg,
 this eighth day of June 1907.

Henry Houck
 Secretary of Internal Affairs.